



SEAD

Sustainable Environment
Actionable Data

SEAD-DATA.NET

Using SEAD to Collaborate, Share, and Publish Data

July 8, 2016 | UM Biological Station (UMBS)
Presented by Anna Ovchinnikova

M UNIVERSITY OF MICHIGAN

Ψ INDIANA UNIVERSITY



Cooperative agreement
#OCI0940824

I ILLINOIS
UNIVERSITY OF ILLINOIS AT URBANA-CHAMPAIGN



Welcome to SEAD!

Tools for data management, curation, & publication

SEAD offers Project Spaces aimed at:

- ◆ Physical and social sciences researchers
- ◆ Voluminous and heterogeneous data
- ◆ Teams working collaboratively



SEAD Infrastructure

PROJECT SPACES



NCED
National Center for Earth-surface Dynamics



Canopy DB
Canopy Science Data and Applications



NMS
National Mindset Study



CM-JRMS
Jamaica Returned Migrants Study

PUBLICATION SERVICES STAGING AREA

PARTNER REPOSITORIES



openICPSR
at the Inter-university Consortium for Political and Social Research



SEADS-NDS
Labs Publisher Prototype at the National Data Service



IU SEAD
at Indiana University



ARC-TS
at the Advanced Research Computing Technology Services at the University of Michigan



IDEALS
at the University of Illinois at Urbana-Champaign

SEAD Terminology

- ◆ *A Dataset* = a set of any number of files in any format
 - The primary organizing structure for files; can be further organized with folders
 - The publishable unit
 - Assign metadata at both the file and dataset level
 - Can be copied across multiple Project Spaces



SEAD Terminology (continued)

- ◆ *A Collection* = a superstructure to bring together multiple datasets and their associated files in an unlimited number of ways
 - A collection can be added to any project space you belong to



SEAD Terminology (continued)

◆ Publishing Data vs. Making Data Public

- Create a *Curation Object* by clicking on the “Publish” button
- Make final changes to the Curation Object in the Staging Area
- Select the UMBS repository

DOI

LONG-TERM REPOSITORY

DATAONE CATALOG



SEAD Terminology (continued)

◆ Making Data Public in SEAD

- Allow public access to individual datasets
- Once a Project Space is verified, the entire Project Space can be made public
- No DOI, and your data is not sent to a repository



Project Spaces

- ◆ Secure environment that you control
- ◆ Create hierarchical groupings for data
- ◆ View auto-extracted metadata & add your own
- ◆ Enable public access to individual datasets
- ◆ Publish data to repository of your choice

SECURE

COLLABORATIVE

SELF-MANAGED



Project Spaces

✓ A central place for your team
to access your team's data and metadata



Project Spaces

✓ A single place to work on and
to deposit your data to the UMBS Repository

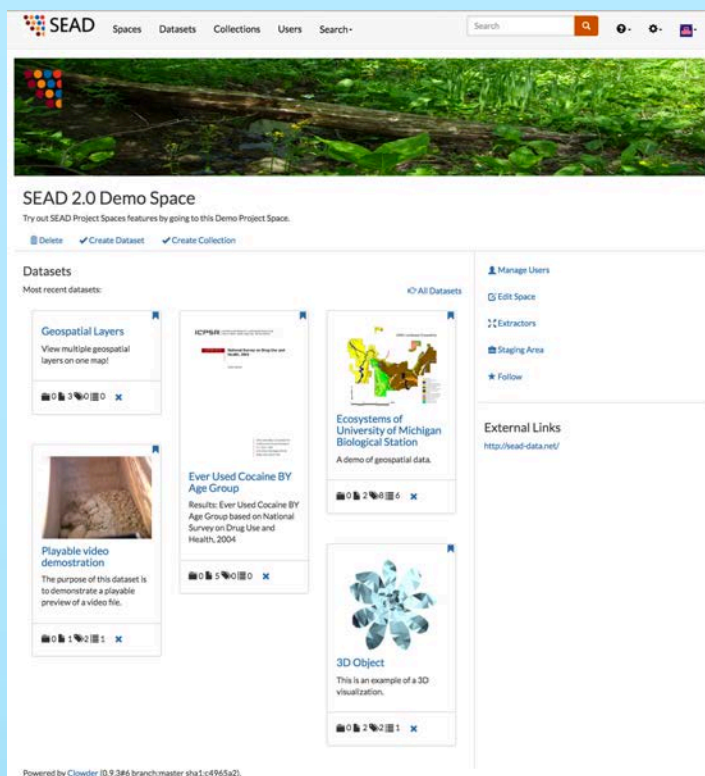


Project Spaces

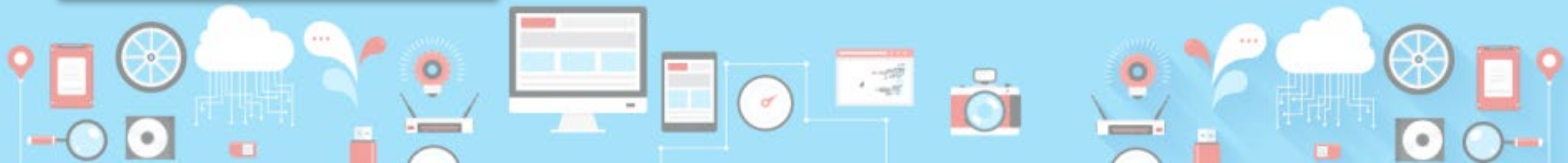
- ✓ Share your data more easily
- ◆ Keep your data secure until you're ready to make them public
 - ◆ Control access to your data



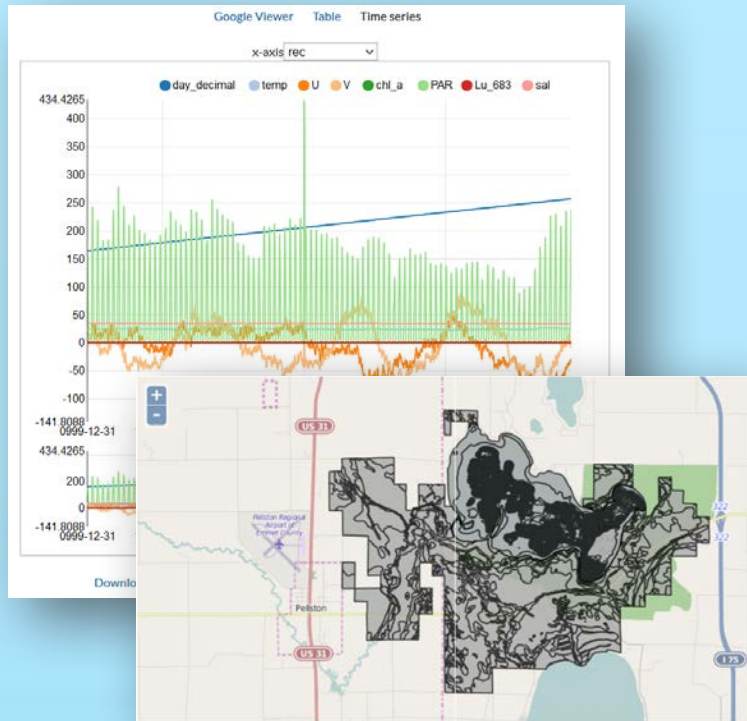
Project Spaces Functionality



- ◆ Upload files in any format
- ◆ Organize datasets with folders and subfolders
- ◆ Create collections and subcollections
- ◆ Annotate data with metadata
- ◆ Add tags and comment on data



Project Spaces Functionality (continued)



- ◆ Work with type-specific previews incl. maps, zoomable images, playable videos, tabular spreadsheet displays, document page views, etc.



SEAD: Like Dropbox but Better (for scientists)

- ◆ Organize and describe your data with less effort
- ◆ Collaborate more effectively with your team
- ◆ Publish any part of your data any time
- ◆ Increase your research efficiency and promote its visibility
- ◆ Meet institutional and grant requirements more easily



SEAD Project Spaces Demo



Coming Enhancements

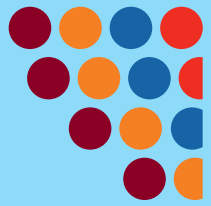
- ◆ Custom metadata fields
- ◆ Bulk operation capabilities (uploading, deleting, applying metadata, geotagging, and more)
- ◆ Relationships between datasets
- ◆ Improved data and metadata display



Coming Enhancements (continued)

- ◆ Zoom and full-screen view for images
- ◆ Move files from one folder to another; from one dataset to another
- ◆ Improved search and sorting of results
- ◆ Comment alerts





SEAD

Sustainable Environment
Actionable Data

SEAD-DATA.NET



Visit SEAD

www.SEAD-data.net



Contact SEAD

SEADdatanet@umich.edu



Follow SEAD

Twitter: [@SEADdatanet](https://twitter.com/SEADdatanet)



Like SEAD

Facebook: [/SEADDataNet](https://www.facebook.com/SEADDataNet)

